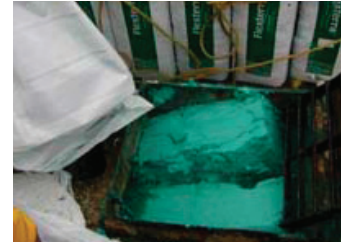


# Conwed Fibers® Hydro Mulch® 2000

## Wood Fiber with Tackifier

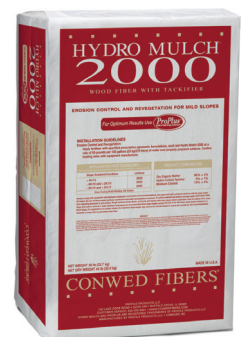
### Provides protection on difficult sites and conditions!

- Conwed Fibers® Thermally Refined® wood fibers utilize heat and pressure to break wood down into more fibrous material with greater surface area. This results in greater yield, higher water retention and increased productivity, which lowers project costs
- Conwed Fibers® Hydro Mulch® 2000 has a premium organic polysaccharide tackifier that is pre-blended within the wood fiber, which ensures enhanced coverage
- Eliminates the extra step and mess of field mixing
- Polysaccharide tackifier enhances the chemical bond within the mulch matrix for better erosion control
- Disperses quickly in water, which allows for better blending with seed and fertilizer
- Ideal protection for critical slopes and sites where weather calls for an extra measure of protection
- Thermally Refined wood fibers holds up to 50% more water than competitors products – creating an excellent environment for seed germination
- Non-toxic and environmentally safe
- Maximum slope length of 30 feet [9 m]
- Use approved mechanically agitated equipment for optimum pumping and application performance
- Conwed Fibers Hydro Mulch 2000 functional longevity is  $\leq 3$  months



#### Product Composition:

Thermally Refined® Wood Fibers – 85% $\pm$ 3%	<b>Slope Gradient/Condition</b>	<b>Rate</b>
Polysaccharide Tackifier – 3% $\pm$ 1%	$\leq 4H:1V$	2000 lb/ac [2300 kg/ha]
Moisture Content – 12% $\pm$ 3%	> 4H:1V and $\leq 3H:1V$	2500 lb/ac [2800 kg/ha]
[40] 50-lb [23 kg] bales per pallet	> 3H:1V and $\leq 2H:1V$	3000 lb/ac [3400 kg/ha]



PROFILE Products LLC · 750 Lake Cook Road · Suite 440 · Buffalo Grove, IL 60089  
 Technical Assistance: 800-508-8681  
[www.conwedfibers.com](http://www.conwedfibers.com)